



RAINBOW REGATTA

APRIL 21, 2015

ORGANIZING AUTHORITY: FWSA

HOSTED BY DINGHY DAMES AND MAINSHEET MAMAS AT

DAVIS ISLAND YACHT CLUB

TAMPA, FLORIDA

SAILING INSTRUCTIONS

1 RULES

- 1.1 The regatta will be governed by the *rules* as defined in *The Racing Rules of Sailing*.
- 1.2 At registration each team member shall be supplied with a colored streamer which must be attached to the top of her sprit while racing.

2 NOTICES TO COMPETITORS

Notices to competitors will be posted on the official notice board located on the west exterior wall on the lower level of the Clubhouse.

3 CHANGES TO SAILING INSTRUCTIONS

Any change to the sailing instructions will be posted before 0830 on the day it will take effect, except that any change to the schedule of races will be posted by 2000 on the day before it will take effect.

4 SIGNALS MADE ASHORE

- 4.1 Signals made ashore will be displayed from the flagpole at the west end of the property.
- 4.2 When flag AP is displayed ashore, '1 minute' is replaced by 'not less than 45 minutes' in the race signal. This changes Race Signal AP.

5 SCHEDULE OF RACES

- | | |
|------|-----------------------------|
| 1000 | First Scheduled Warning. |
| 1330 | No warning after this time. |

6 RACING AREAS, CLASS FLAGS and MARKS

See Attachment 1.

7 COURSES

The diagrams in Attachment II show the courses, including the approximate angles between legs, the order in which marks are to be passed and the side on which each mark is to be left.

8 THE START

The starting line will be between a staff displaying an orange flag on the race committee signal boat at the starboard end and the course side of a port end starting mark.

9 CHANGE OF THE NEXT LEG OF THE COURSE

To change the next leg of the course, the race committee will move the original mark (or the finishing line) to a new position.

10 THE FINISH

The finishing line will be between a staff displaying an orange flag on a race committee boat and the course side of the finishing mark.

11 TIME LIMITS

- 11.1 The time limit for the first boat in each race is 1 hour.
- 11.2 Boats still racing more than 20 minutes after the first boat sails the course and finishes will be scored TLE without a hearing and will receive two more points than the number of finishers. This changes RRS 35, 63.1, A4, A5 and A11.

12 SCORING

- 12.1 A boat's score shall be total of all her race scores.
- 12.2 Three races are scheduled.
- 12.3 One completed race is required for this regatta.

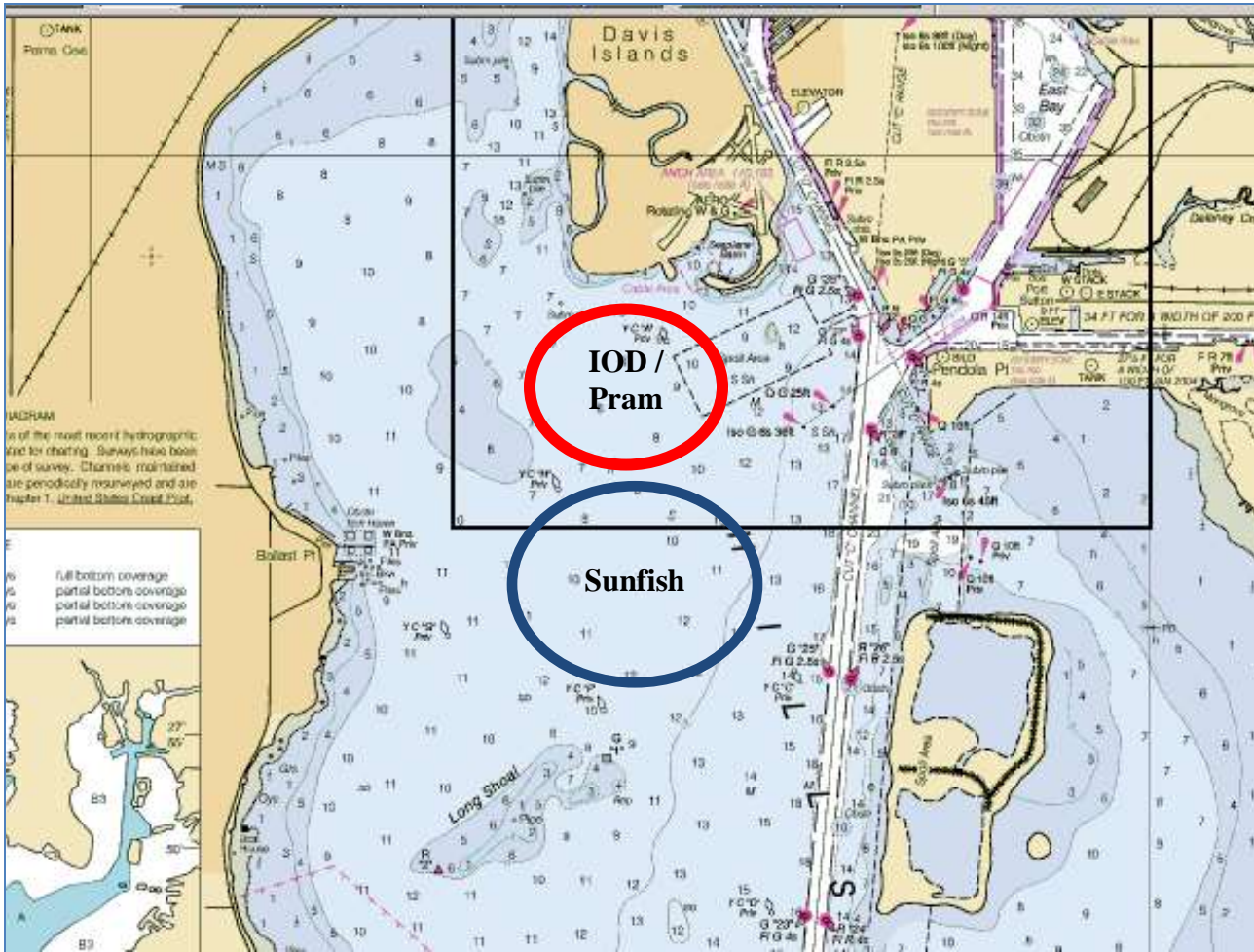
13 PROTESTS AND REQUESTS FOR REDRESS




- 13.1 Protest forms are available at the Regatta Room. Protests shall be delivered there within 30 minutes after the race committee finish boat docks. The docking time will be posted on the Official Notice Board.
- 13.2 Notices will be posted within 15 minutes after the protest time limit to inform competitors of hearings in which they are parties or named as witnesses. Protests will be heard in the approximate order of receipt in the Regatta Room.

14 SAFETY

- 14.1 Prior to the warning signal for the first race of each day in which it intends to compete, each boat is requested to sail by the race committee signal boat and hail its sail number.
- 14.2 A boat retiring from a race or leaving the racing area early shall promptly notify the race committee either by hail or by telephone to the Clubhouse at (813) 251-1158.

Attachment I – Sailing Areas, Mark Description, Class Flags



Course	VHF Channel	Mark descriptions	Class Flags	Class Flags
IOD / Pram	69	Weather, Jibe, Leeward – Yellow tetrahedrons Start/Finish – Orange Balls	IOD - Opti on white background Pram – Opti on green background	 
Sunfish	71	Weather, Jibe, Leeward – Orange tetrahedrons Start, finish – Orange Balls	Sunfish on white background	

Attachment II – Possible Courses (NOTE – all marks to port)

